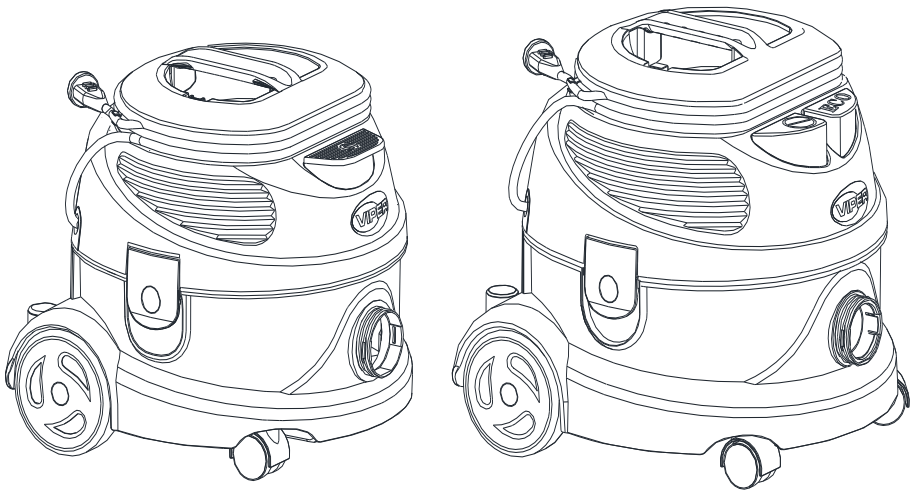




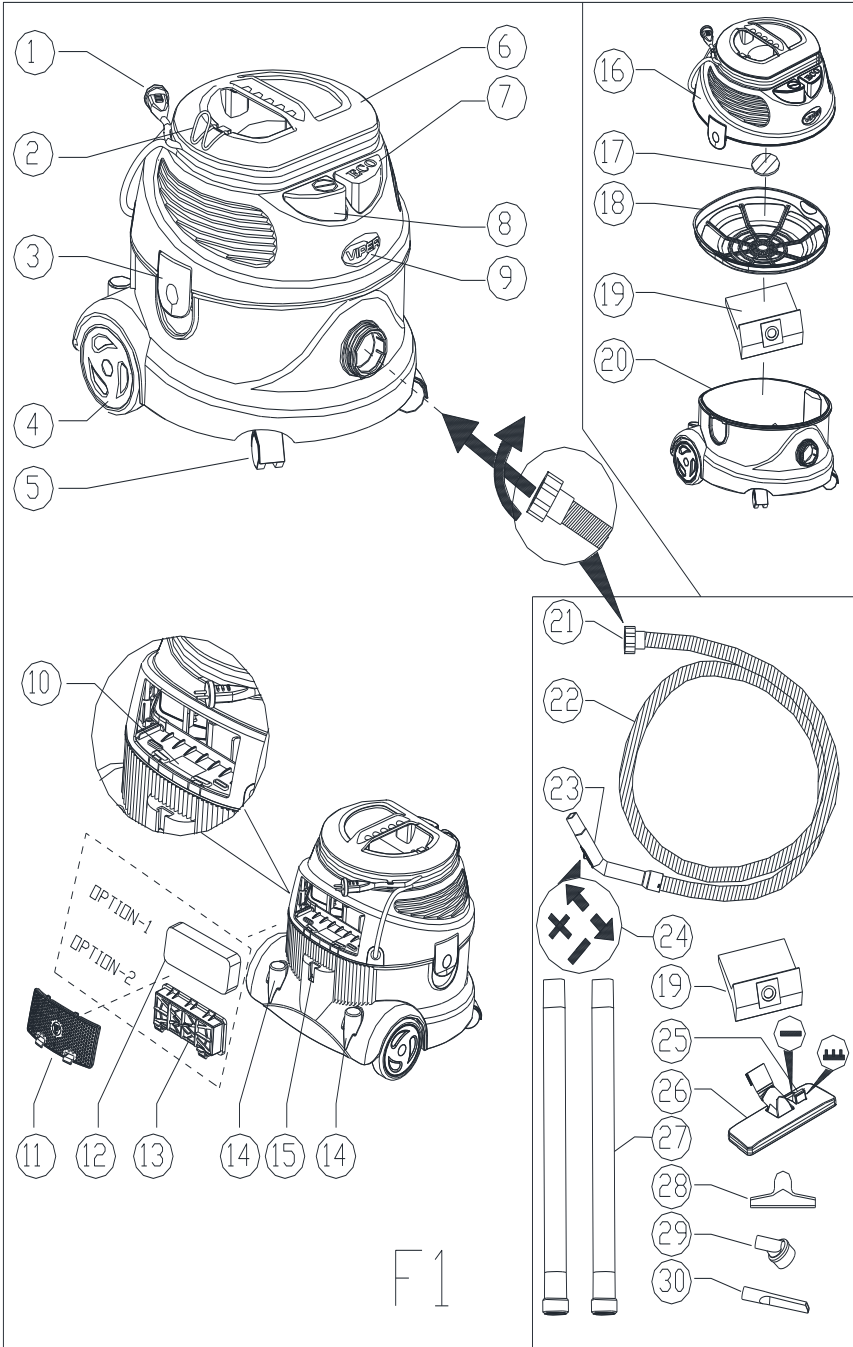
DSU8/DSU10/DSU12/DSU15
8L/10L/12L/15L Dry Vacuum Cleaner
8L/10L/12L/15L

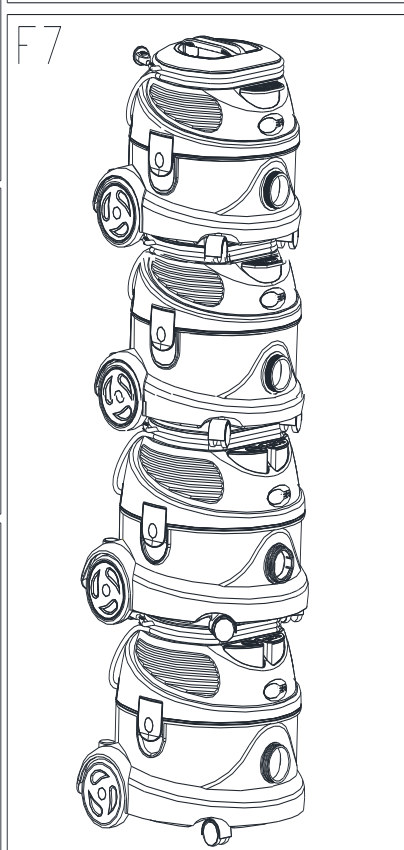
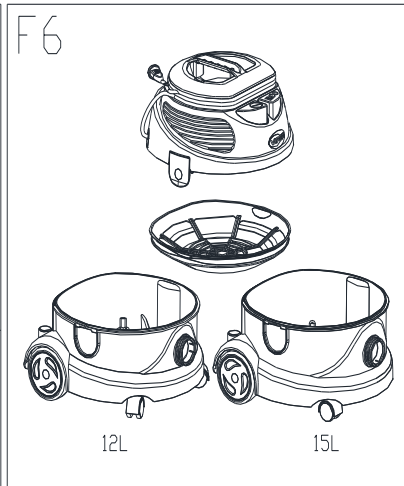
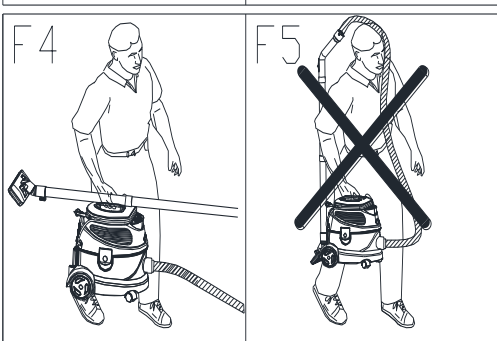
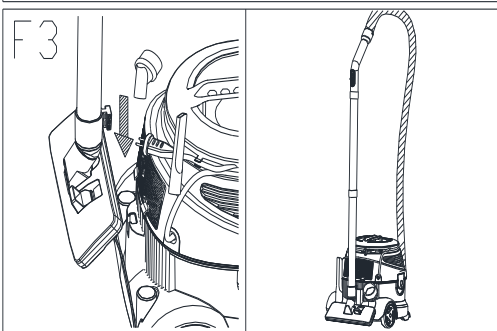
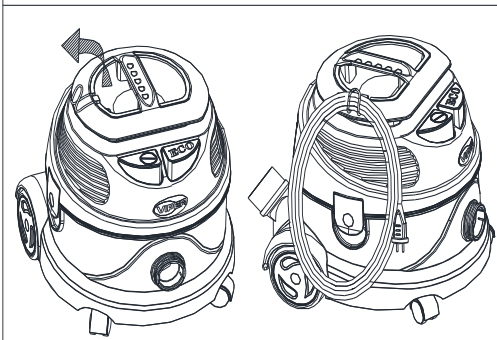
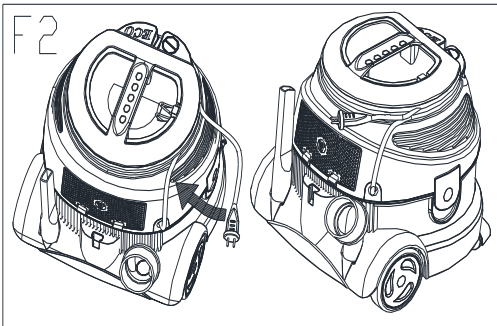
OWNER'S MANUAL



VA81412

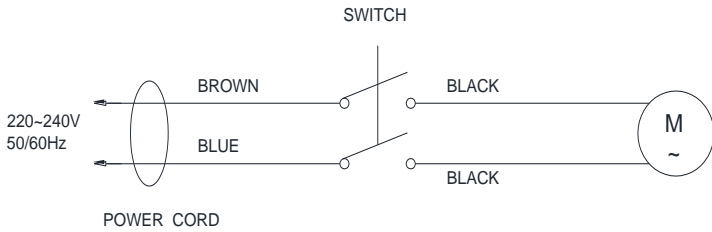
Rev.2018/4/16





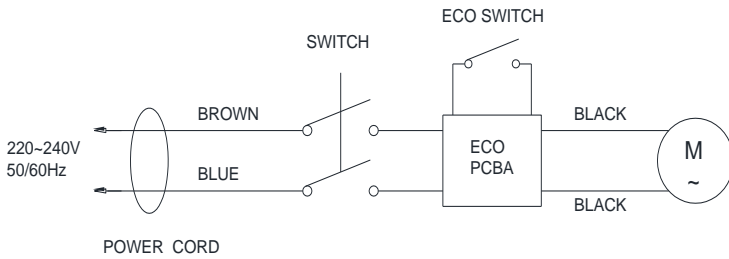
F8

DSU8/DSU10 Circuit Connection Diagram



F9

DSU12/DSU15 Circuit Connection Diagram



Product Specification Parameter/ (F 10)

Model No.	Capacity (L)	Voltage (V)	Frequency (Hz)	Power (W)	Vacuum (mmH2O)	Air Flow (ltr/min)	Noise (dBA)	Weight (Kg)	Size (LxWxH)mm
DSU 8	8	220~240	50/60	880	2200	1834	72	5.0	340x325x325
DSU 10	10	220~240	50/60	880	2200	1834	72	5.2	340x325x340
DSU 12	12	220~240	50/60	880	2200	1834	73	5.4	371x357x355
DSU 15	15	220~240	50/60	880	2200	1834	73	5.6	371x357x370

DSU8/10-EU/UK 8/10L DRY VAC 220-240V	
Energy efficiency class	C
Annual energy consumption (kWh/year)	35
Dust pick up on carpet	E
Dust pick up on hard floor	D
Dust re-emission class	D
Sound power level dB(A) IEC/EN 60335-2-69	72
Rated power (W)	880

DSU12/15-EU/UK 12/15L DRY VAC 220-240V	
Energy efficiency class	C
Annual energy consumption (kWh/year)	36
Dust pick up on carpet	E
Dust pick up on hard floor	D
Dust re-emission class	C
Sound power level dB(A) IEC/EN 60335-2-69	73
Rated power (W)	880

Instruction:

- This machine is widely used in hotels、 schools、 marketplace、 office、 hospital、 commercial and household cleaning etc.
- This manual should be read thoroughly before operation.
- Please use the recommended accessories when operating the machine.

Before operating this machine:

- Make sure that all the safety functions are normal, and ensure that the actual operation voltage is in accordance with the required voltage rate.

Description of the construction of the device. For parts diagrams of construction, refer to “F1” Diagram on page 3.

1. Power cord
2. Cable hook
3. Latch
4. 4.3inch back big wheel
5. Omni-directional wheel
6. Handle
7. ECO switch
8. Power switch
9. LOGO
10. Serial number label
11. Exhaust cover
12. Exhaust filter sponge
13. HEPA filter
14. Accessory parts storage column
15. Combination tool storage position
16. Machine head assembly
17. Motor pre filter cotton
18. Main filter basket
19. HEPA dust bag
20. Dust tank assembly
21. Machine hose connector
22. Suction hose
23. Suction tube operation handle
24. Suction force regulator
25. Nozzle transfer switch

26. Combination tool
27. Straight iron tube
28. Upholstery tool
29. Dusting tool
30. Crevice tool

Remark: the parts or accessories are subject to change without prior notice, please forgive.

Operating instructions

1. Please use the recommended dust bag. Insert the latex ring of dust bag into the suction port of dust tank, and place dust bag flatly in the dust tank.
2. Put the main filter basket placed in the dust tank with dust bag. (Note: the placement of main filter basket has its direction, the side with the letter “Back” needs toward the back of machine.)
3. Place the machine head, then lock two side latch of machine head.
4. Connect machine connector of the corrugated hose assembly screw with the dust tank thread.
5. Plug power cord into outlet, press the red switch to start the machine for operation. (Note: DSU8/DSU10 has only red power switch, DSU12/DSU15 contains the red power switch and the ECO energy-saving switch, power saving mode and maximum power mode can be changed by gently touched the ECO switch for easy transformation.)

6. When stopping the machine, only press the red power switch one time.

7. The crevice tool can be used for cleaning narrow and hard to reach areas, the dusting brush and upholstery tool can be used for cleaning curtains and upholstered furniture.

Warranty

This product has been designed to provide trouble free operation for a number of years with the correct maintenance, The machine comes with a 12 month manufactures warranty against component defects.

In the unlikely event that your VIPER product develops a fault please contact the place of purchase or your nearest authorised VIPER dealer.

1. Incorrect or improper operation of the machine.
2. Parts damaged by improper use or neglect..
3. Machine structure damaged by improper use or neglect..

Care and Maintenance

1. After using, place the machine in dry and ventilated place.
2. Before using this product please check the condition of the pre filter, dust bag and main filter and replace as required.

Please check the exhaust filter on a regular basis at least once a month depending on the usage.

3. Remove the suction hose and check the hose whether has any obstruction or is damaged;

4. If during use the machine suffers from a lack of suction in the first place please check that the dust bag is not full failing that please check the main filter basket, motor pre filter and exhaust filter;

5. After use, beating or using brush cleaning the main filter basket.

6. After cleaning the main filter basket, they must be completely dry when re-used.

Warning

As with all electrical equipment care and attention must be exercised at all times during its use, in addition to ensuring that routine and preventative maintenance is carried out periodically in order to ensure its safe operation. Failure to carry out maintenance as necessary, including the replacement of parts to the correct standard could render this equipment unsafe and the manufacturer can accept no responsibility or liability in this respect.

► This machine is not suitable for hazardous materials such as hazardous dust flammable or explosive material. It is the customers responsibility to carry

out a thorough risk assessment before using this product.

▶ Do not Clean hot materials, do not clean the fireplace、 roaster and other contains similar hot object source.

▶ Do not vacuum water、 liquid and other flammable gasses.

▶ If the power cord or plug has any damage, do not use this machine, before using the machine check the power cord and plug is not damaged or shows signs of ageing, If any damage is found to the power cord or plug, please contact the nearest authorised service center.

▶ Don't touch the power cord and plug when your hand is wet, when you need to remove the plug, the right way is by holding the plug then pull the plug, do not just pull the wire. Before carrying out any maintenance on the machine you should turn off the power and remove the plug from the socket.

▶ This machine is only to be used by persons who have been trained and have read this manual.

Storage

1. Storage mode of cleaner accessories (crevice tool、 dusting tool、 upholstery tool) can be referred to picture **F3**.

2. Two kinds of storage power cord

mode can be referred to pictures **F2**.

3. Machine stacking storage can be referred to picture **F7**.

4. The right carrying machine way with accessories storage can be referred pictures **F4**, improper carrying way with accessories storage can refer to pictures **F5**

Circuit connection diagram:

DSU8/DSU10 circuit connection diagram can be referred to **F8**.

DSU12/DSU15 circuit connection diagram can be referred to **F9**.

Product specification parameter

For specification parameter referred to "F10".



Company information
www.vipercleaning.eu
info-eu@vipercleaning.com